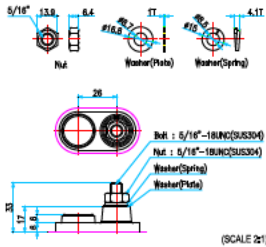


AW T105

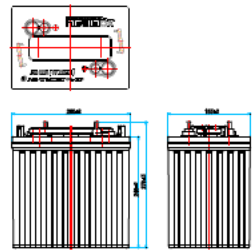
Flooded wet cell deep-cycle battery



AxiWin



Die-casting terminal



G1-01

Technical Feature

◆ Case & Cover

1. Use of Polypropylene(PP) resin.
2. A special saddle plate installed for prevention of a short on the bottom from withdrawal of active substances.
3. A design which keeps in electrolyte from being leaking

◆ Separators

1. Use in highly porous and corrosion-resistant PVC or PE material.
2. A glass mat applied to the surface to prevent withdrawal objective substances.
3. Low electric resistance and excellent physical traits.

◆ Plates

1. Made from 99.99% or higher purity lead processed into an active substances.
2. Use an antimony alloy metal with higher corrosion-resistance on the board.
3. The negative plate uses highly porous and deep cycle-resistant additives.
4. A special additive applied the positive plate for long service life.

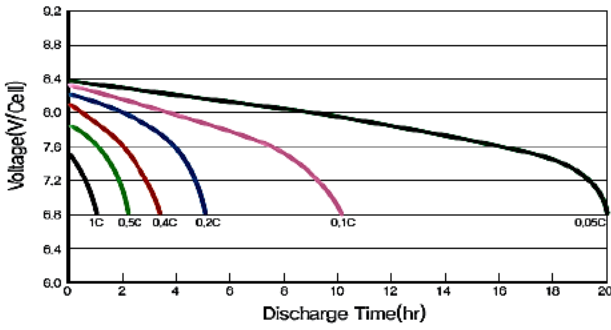
◆ Electrolyte & Cap

1. Electrolyte contain highly pure, refined sulfuric acid (KS M 1203 No.3 or higher)
2. CAP has a structure that can filter acid haze and gas generated during the recharge step 3, discharge only the gas.
3. Uses a flame arrestor that can prevent an explosion from inflammation of the interior.

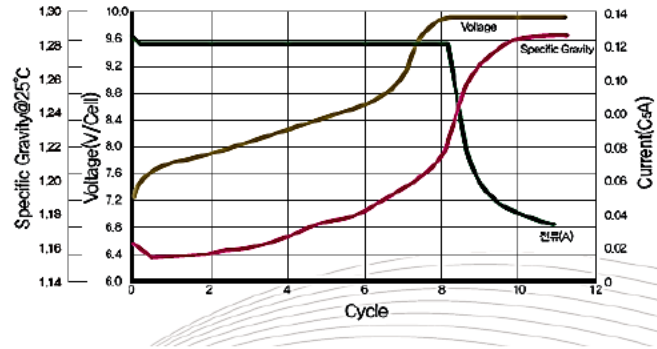
Battery model	T105 (6V225AH / 20 HOUR RATE)			
Dimensions (mm)	Length	Width	Height	Total Height
	260	183	247	279
Approx. weight	28.6kg (63.05lbs)			
Operating temperature (°C)	Charge	10 ~ 35°C		
	Discharge	-15 ~ 45°C		
Max. discharge current (5sec)	400 A	Recommended max. discharge current (continuous)		100A
Capacity affected by Temperature	30°C(86°F)	25°C(77°F)	10°C(50°F)	-10°C(14°F)
	105%	100%	94%	75%
Electrolyte / Separator	Sulfuric Acid 1.280±0.015 sp.gr (25°C) / PVC or PE + Glass mat			
Recommended Charging (25°C)	Charging voltage (Constant power)		Charging current	
	2.375V/cell absorp ion & 2.58V/cell finishing voltage		Max 60.0A	

Discharge specification	AH (Ampere Hour)			Minutes of Discharge		
	100HR	20HR	5HR	@75A	@56A	@25A
Capacity (25°C)	248	225	185	115	158	425

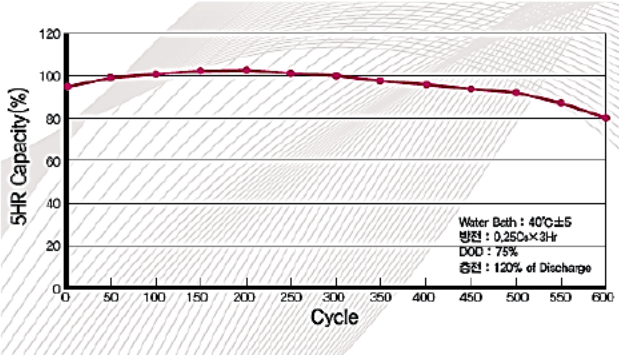
Discharge characteristics



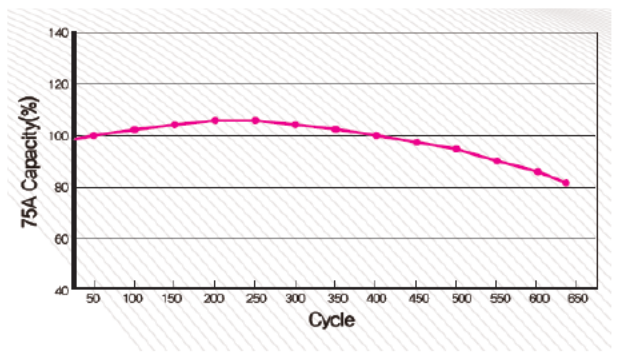
Charging characteristics



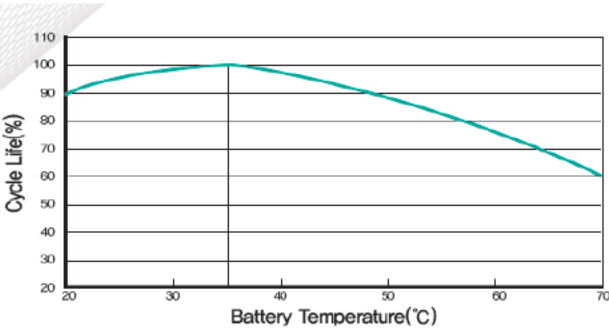
5HR Cycle life characteristics



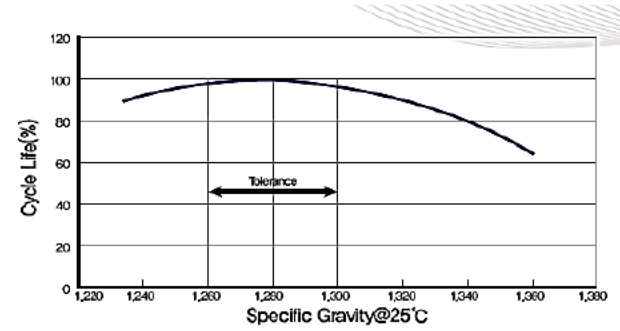
75A discharge cycle life characteristics



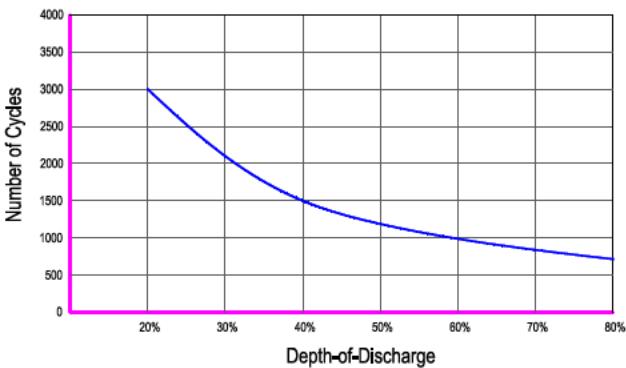
Service life characteristics based on temp.



Service life based on electrolyte sp.gr



Cycle life in a stationary application (@25°C)



Relationship between capacity & Temp.

